

Stainless Steel Centrifugal Pump



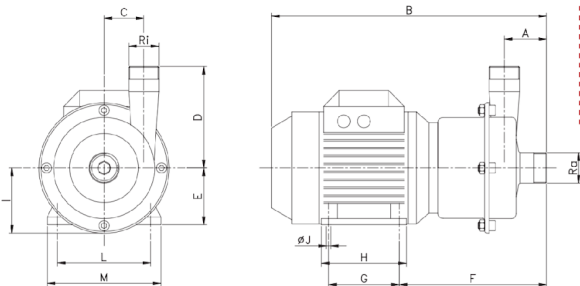
FLUIDO centrifugal pump ideal for the transfer of water and other low viscosity liquids. It is designed to cater for the needs of auxiliary services in the food-processing, chemical industries. Connection with DIN, Clamp, flanges as option

Design Specification

Flow (max)	: 65m ³ /hr
Head (max)	: 45m
Suction Pressure (max)	: 2 bar
Working Temp (max)	: 90°C
Operating Speed	: 3500rpm

Material

Wetted Part	: AISI 316L
Non-Wetted	: AISI 304
Gaskets	: VMQ (Silicone)
Mech Seal	: Cer / C / NBR
Surface Finish	: Electro Polished



PUMP	Motor			GAS/BSP		A	B	C	D	E	F	G	H	I	ØJ	L	M
	Size	kW	RPM	Ra	Ri												
EFI-2003	71	0,37	2900	1"	¾"	60	365	36	100	71	198	90	112	73	7	112	135
EFI-2107	80	0,75		1½"	1"	64	380	48	110	80	204	100	125	86	9	125	153
EFI-2222 EFI-2222A	90L	2,2		1½"	1½"	67	430	66	160	90	227	125	150	103	10	140	170
EFI-2340 EFI-2340B	100	4		2"	2"	70	520	92	192	112	258	140	172	128	12	190	222
EFI-2355 EFI-2355A	112	5,5															
EFI-2375 EFI-2375A	132	7,5															
EFI-4002	71	0,25		1450	1"	¾"	60	365	36	100	71	198	90	112	73	7	112
EFI-4105	80	0,55	1½"		1"	64	380	48	110	80	204	100	125	86	9	125	153
EFI-4211 EFI-4211A	90S	1,1	1½"		1½"	67	405	66	160	90	227	100	125	103	10	140	170
EFI-4322 EFI-4322A EFI-4322B	100	2,2	2"		2"	70	480	92	192	100	251	140	172	128	12	160	197